



# WELCOME TO CHICOPEE TUBE PARK!

**Please check-in at  
the window.**





Please check-in at the  
window

---

Reservations are  
recommended

---

All Guests must be:  
**4+ years old**  
**42" Tall**

---

Guests between the age of  
4-12 require a helmet to  
tube

## RATES:

---

90 MIN TUBING: **\$34**

---

HELMET RENTAL: **\$12**

---

\*Prices excluding tax





# HAVE THE FOLLOWING READY:

## 1. Transaction ID

- a. Check your email

## 2. Completed waivers

- a. All adults must sign their own waiver
- b. Minors must be added to an adult's waiver



# Children 12 and under Require a Helmet

**We require all children 12 and under to wear a CSA approved helmet in order to tube.**

We allow bringing your own helmet.

We do offer helmet rentals for \$12 each at the guest services window. Return them at the window when you are done.

**Helmets are optional for guests the age of 13 and over.**







# HOW TO TUBE!

- 1. Line up until an attendant calls you forward**
- 2. Hold handles (your own & other passengers)**
- 3. Sit in your tube with your feet up**
- 4. Remain seated and hang on until you come to a complete stop (Hold onto your passengers)**
- 5. Exit within your same lane towards the white bags (Do not crossover lanes unless directed)**

**Listen to our attendants at all times**





# RULES

**1**

**Exit towards the end of your lane; DO NOT cross over walls into other lanes**

**2**

**Always listen to our attendants**

**3**

**DO NOT let go of other riders during your slide**

**4**

**Have fun!**



# TUBES

**Tubes can be found  
out the doors on the left**

- Each rider require their own tube
- Riders cannot share a single tube
- Keep your tube with you at all times when outdoors
- Do not block the entrance way and pathway

**Please return your tubes within the  
enclosure before heading indoors**



**Tubes this way!**





# OUR ENVIRONMENTAL MISSION:

**At Chicopee Tube Park, we're more than a great place for summer fun – we're working to build a better future.**

We focus on:

- a. Protecting the environment
- b. Creating a vibrant, welcoming destination
- c. Working with partners and the community
- d. Encouraging innovation and shared learning

**By managing our park responsibly, we support a thriving visitor economy while keeping sustainability at the heart of everything we do.**





**We respectfully acknowledge and thank the *Six Nations of the Grand River* for allowing this park to be built on traditional Indigenous land.**

**We are committed to ongoing respect, stewardship, and partnership.**





## **WE AIM TO MAKE CHICOPEE TUBE PARK ACCESSIBLE AND INCLUSIVE FOR ALL:**

**1**

**Automatic door  
buttons**

**2**

**Elevator access**

**3**

**Staff trained to  
support all  
abilities**

**4**

**Adaptable tubing &  
zipline experiences  
for everyone**





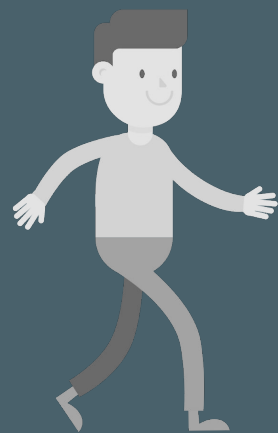
# HELP KEEP CHICOPEE GREEN!



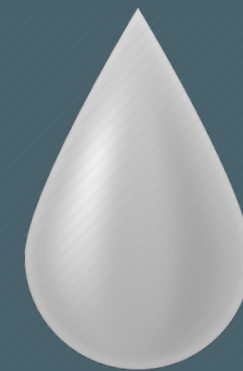
**Don't pick  
plants or  
damage trees**



**Clean up after  
yourself — use  
bins!**



**Stay on marked  
trails to protect  
snowy terrain**



**Bring a  
reusable water  
bottle**



# OUR INITIATIVE: GREEN PATHWAYS

- Over 4 million gallons of water saved through rain capture
  - Proud recipients of the Water Efficiency Award from the Consulting Engineers of Ontario
- Excavated soil reused to shape slopes — saving energy & water
- Switched to LED lighting & efficient equipment





[HOME](#)[ABOUT](#)[SERVICE](#)[CONTACT](#)

# Green Step Certified – And Aiming Higher

We're proud to be Green Step SILVER Certified

Now we're on the path to GOLD!

*Learn more at [greenstep.ca](https://greenstep.ca)*

 **GreenStep** | Sustainable  
Tourism  
**Silver Certified**  
BUSINESS







# CONNECT WITH US!



@chicopeetube



Chicopee Tube Park

& Leave us a Google review!